

AesthEdge



BAMBOO CHARCOAL WOOD VENEER

AesthEdge



+8618953955575



angela@aesthedge.com

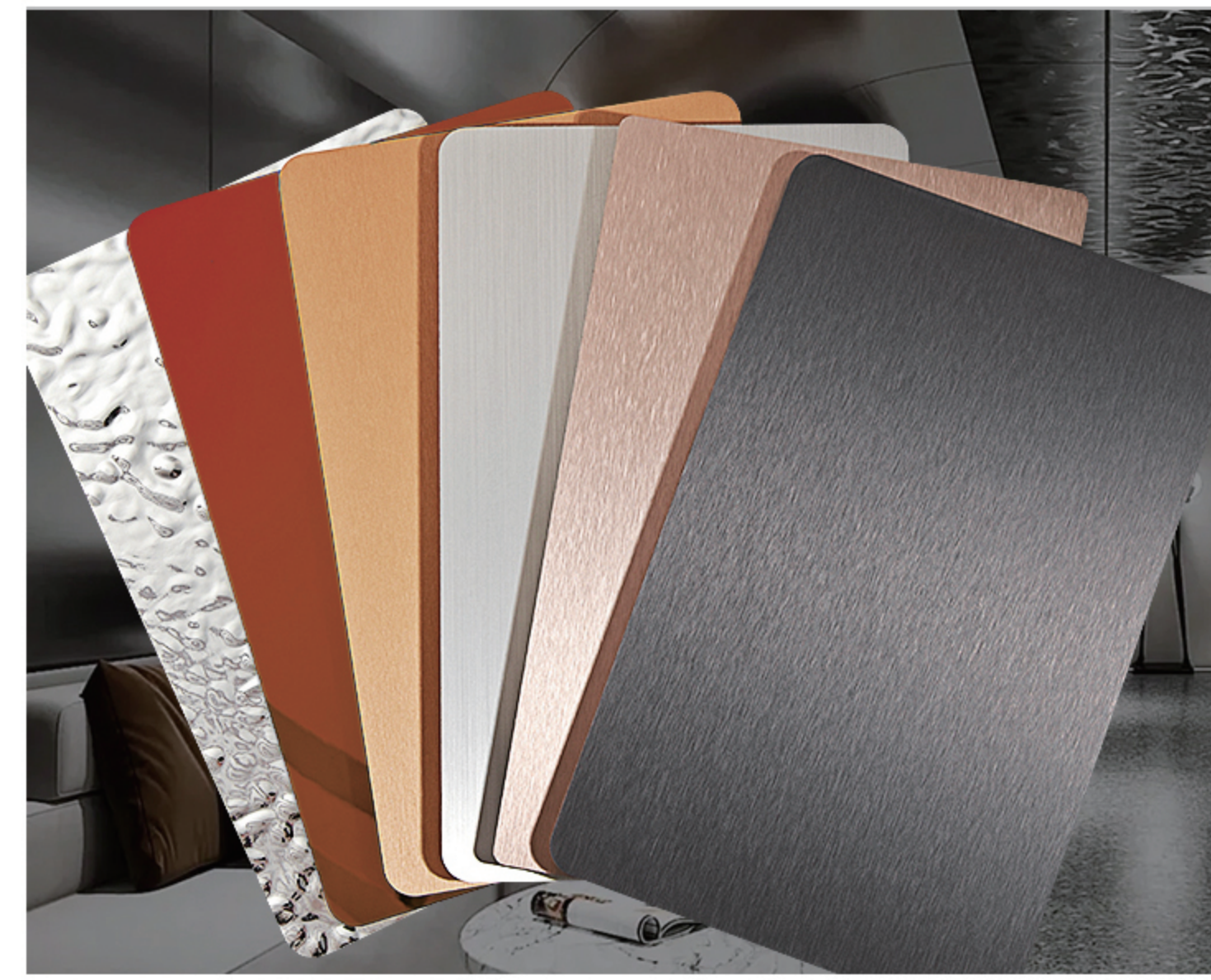


www.aesthedge.com

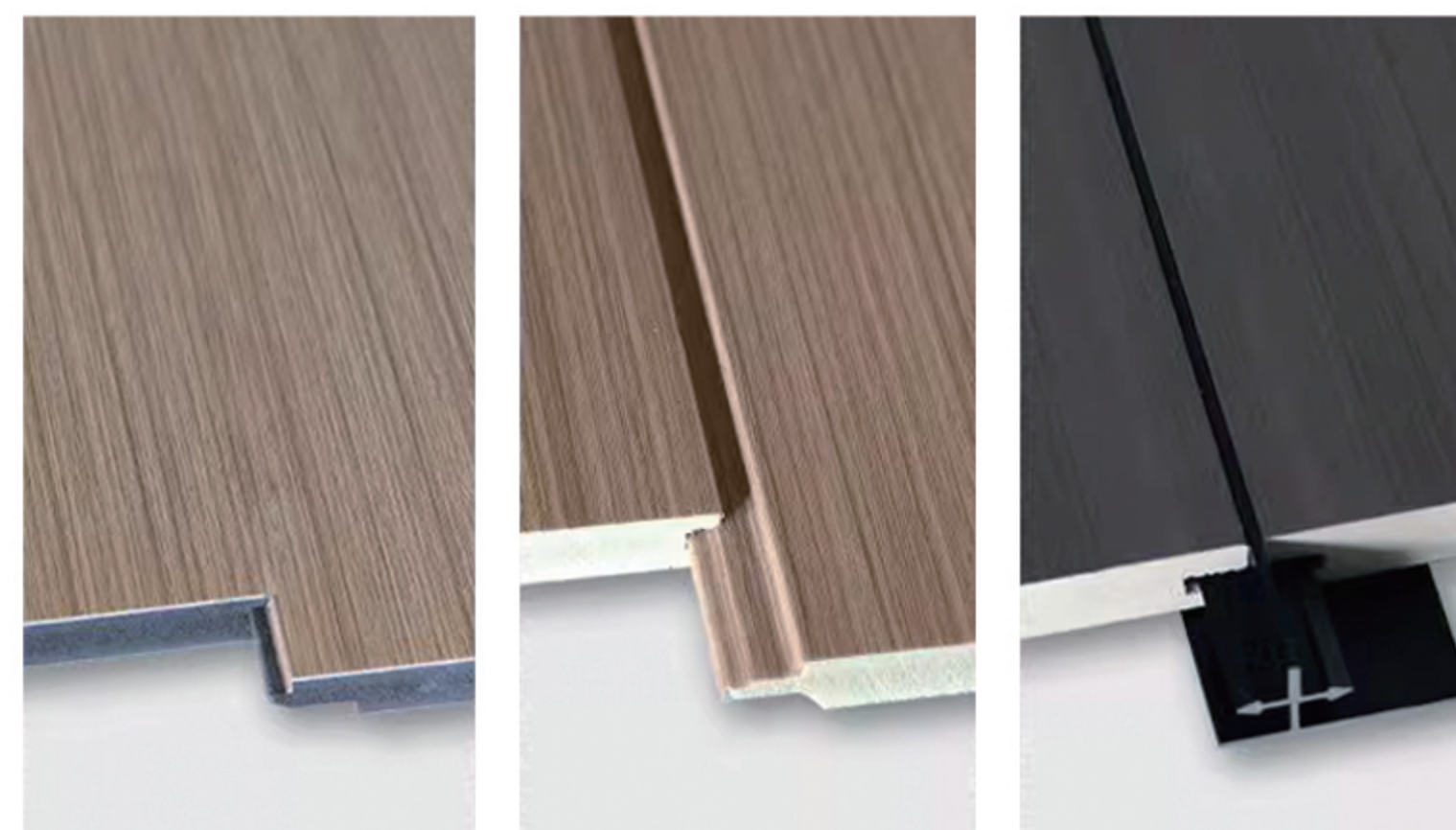


Rm1103, A10Building,Lushang Center,Guangzhou Road,
Lanshan District,Linyi City,Shandong Province,China

Bamboo Charcoal Wood Veneer(WPC foam board) is usually extruded from polyvinyl chloride resin, combined with wood flour and special additives. It has the characteristics of being waterproof, dirt and wear-resistant, lightweight, easy to process, etc., mainly used in architectural decoration (indoor walls, outdoor building exterior walls, and balcony terraces, etc.), furniture manufacturing (tables, chairs, cabinets, etc.) and advertising (display boards, signs, etc.) and other places. The use of raw materials and the production process are relatively environmentally friendly, and the recycling of resources is realized, further reducing the impact on the environment.

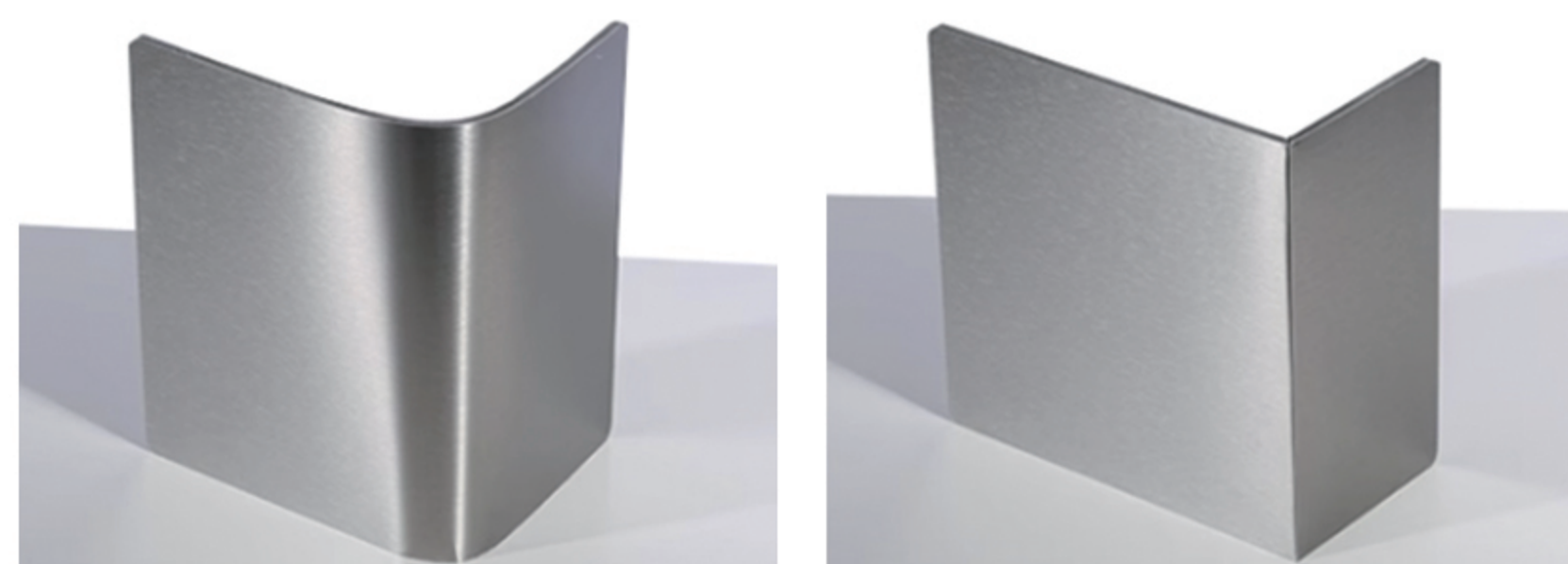


◦ Splicing method

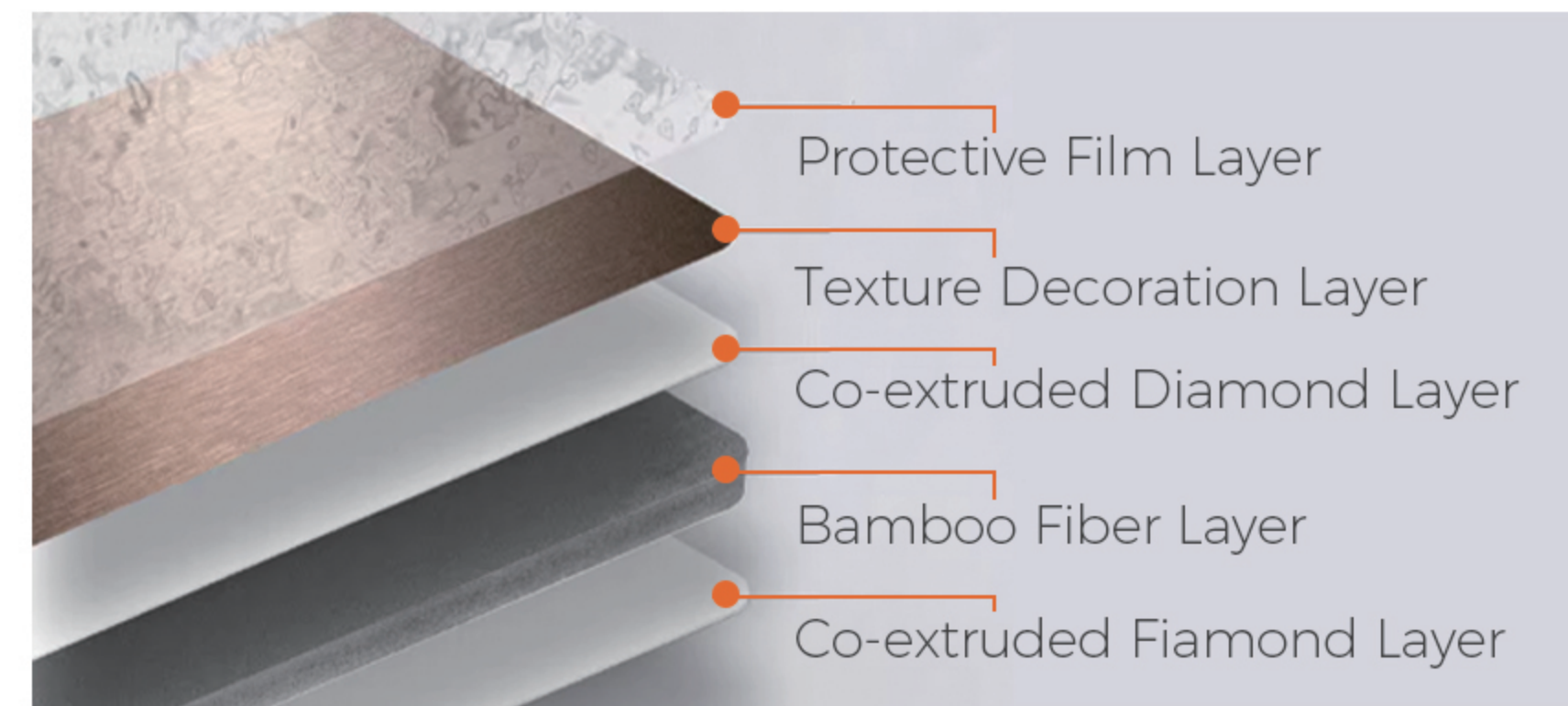
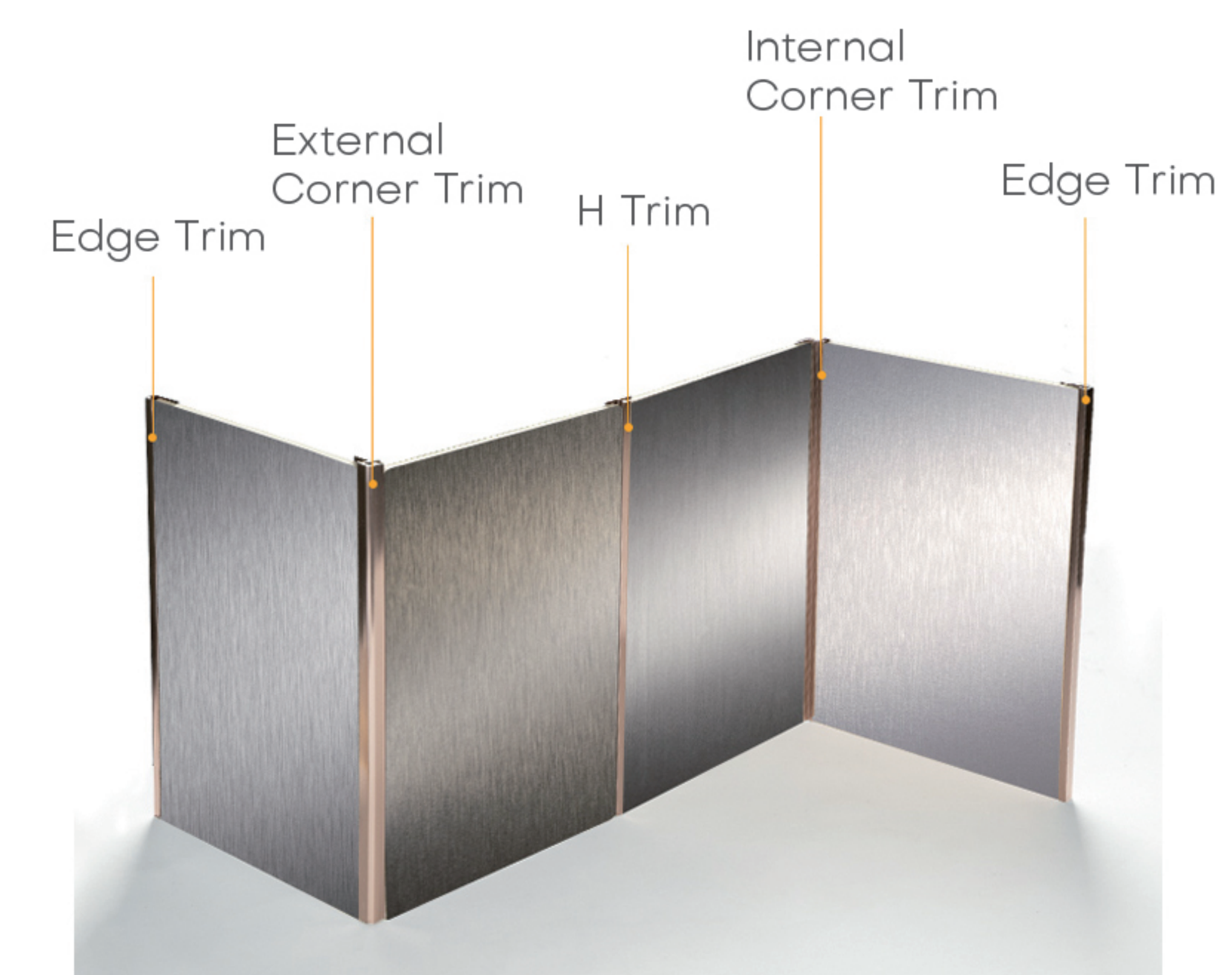


Flat Seam Channel U-shaped Channel Double Female Channel

◦ Bendable and chamferable



◦ Matching lines



Material	Wood plastic composite
Thickness	5/8mm
Size	1220*2440mm(4*8feet),customized
Processing Service	Cutting,Curving,Packing,etc.
Density	0.5-0.9tons/m³
Colour	Wooden Color
Applications	Living room, bedroom, restaurant, hotel, entertainment venue, resort, etc. Indoor wall, ceiling.

Fire-resistant
Flame-retardant

Waterproof
Moisture-proof

Eco-friendly

Soundproof
Noise-reducing

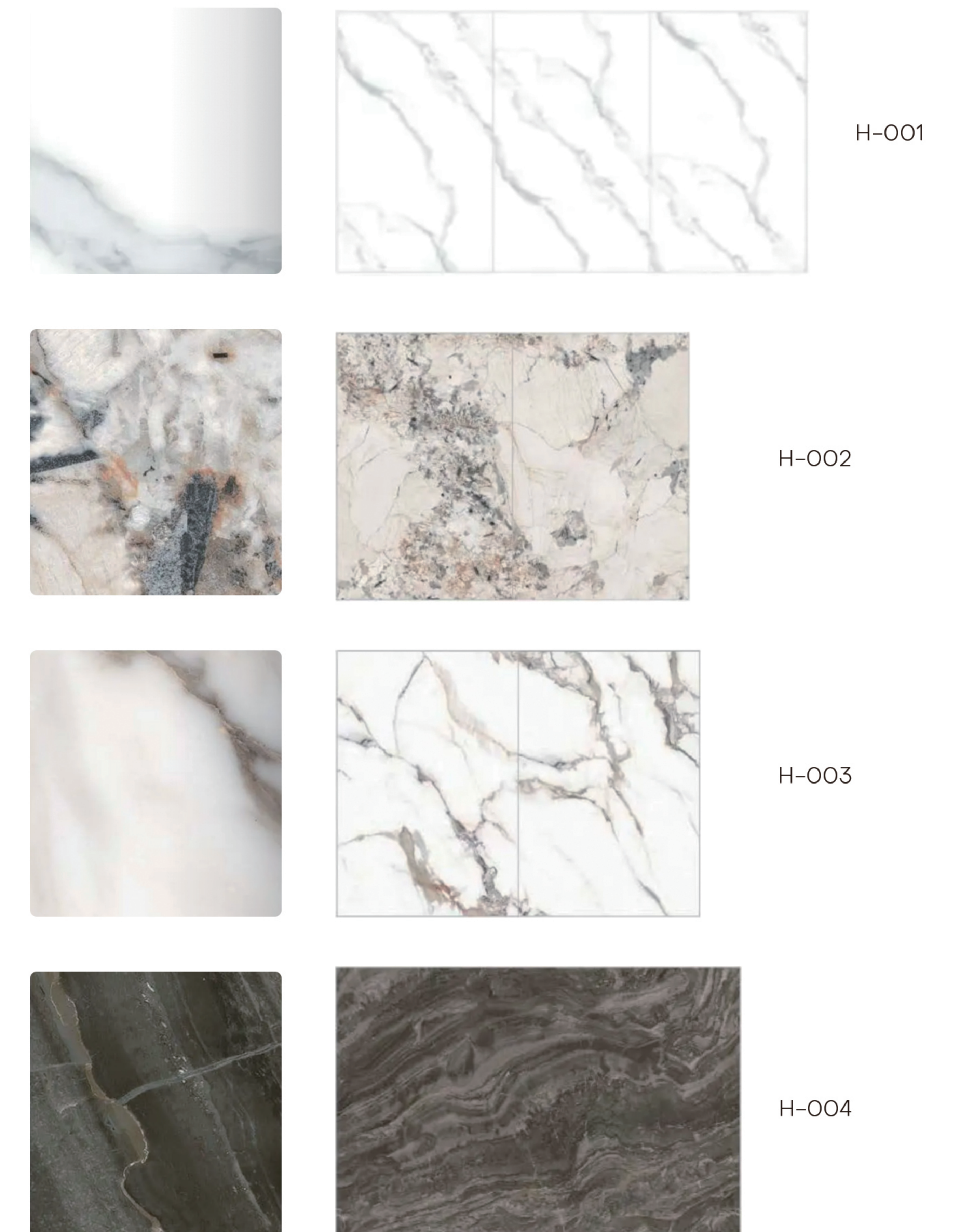
Thermal insulation

Easy to install

PVC Film



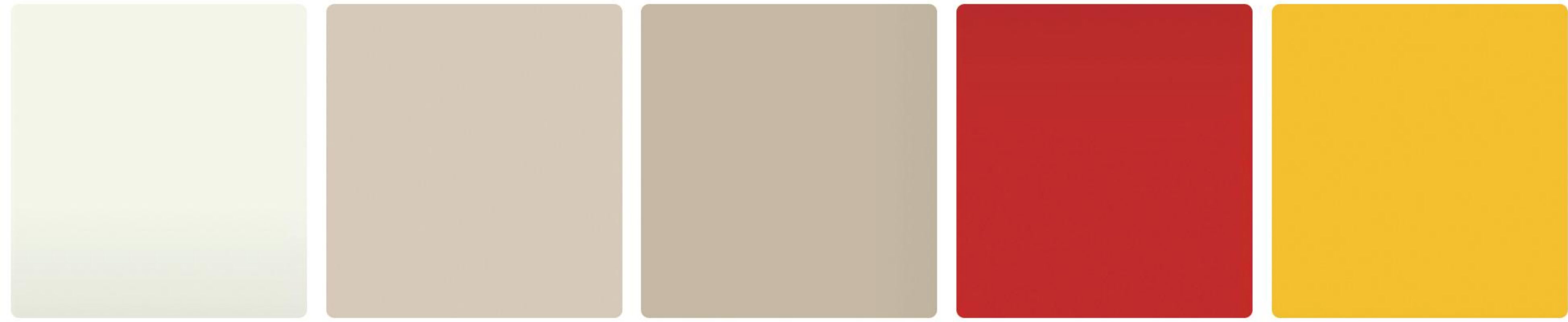
Continuous PET Pattern



Skin Feel



S-001 S-002 S-003 S-004 H-101

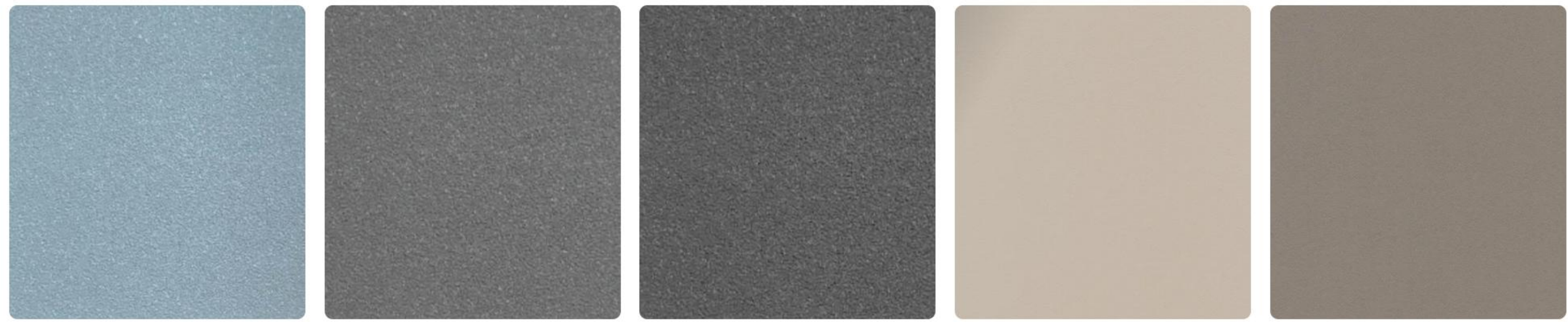


H-102 H-103 H-104 H-105 H-106

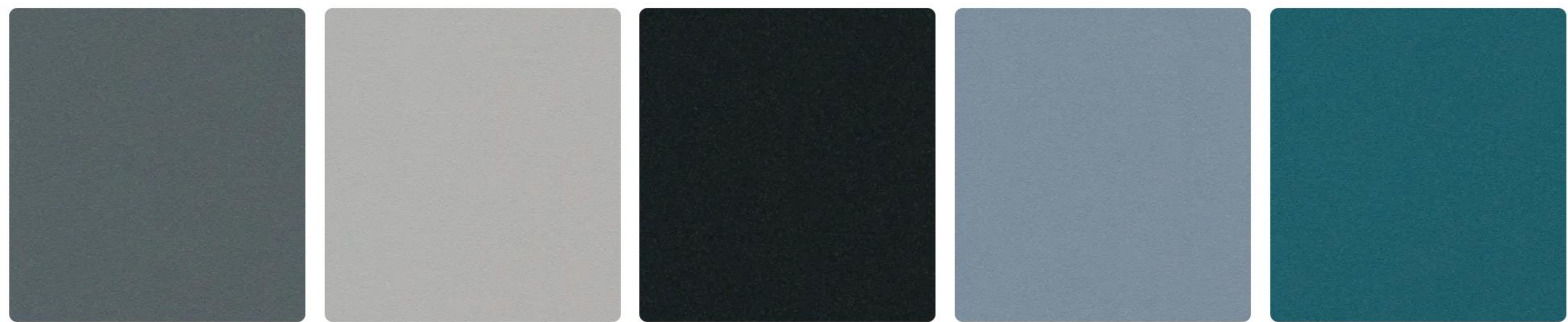


H-107 H-108 R-001 R-002 R-003

Baby's Breath



S-101 S-102 S-103 H-201 H-202



H-203 H-204 H-205 H-206 H-207

Metal Wire-Drawing

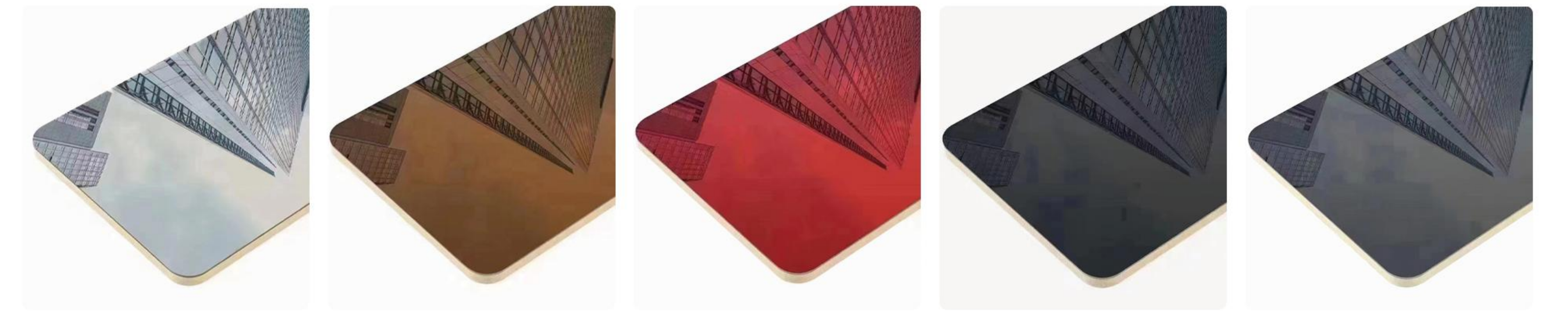


H-301 H-302 H-303 H-304 H-305



H-306 H-307 H-308 H-309 H-310

Mirror

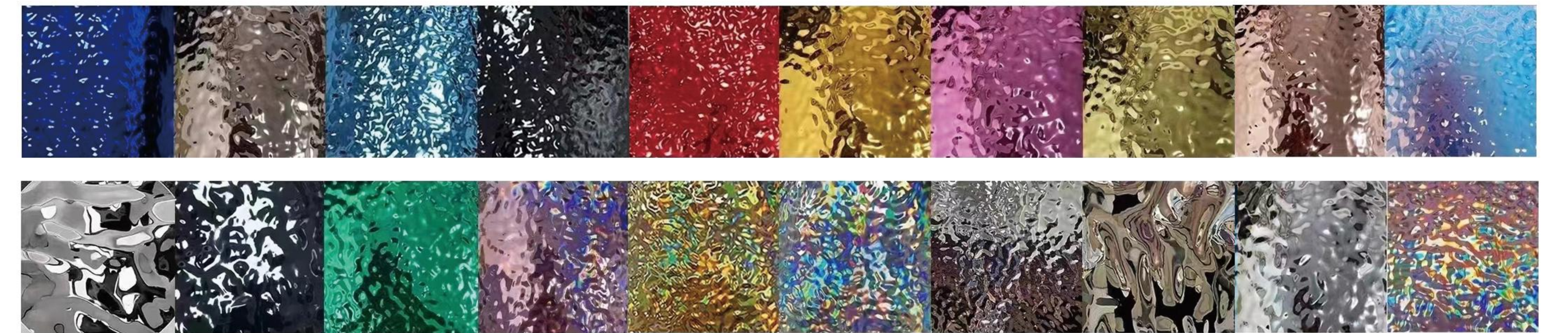


S-201 S-202 S-203 S-204 S-205

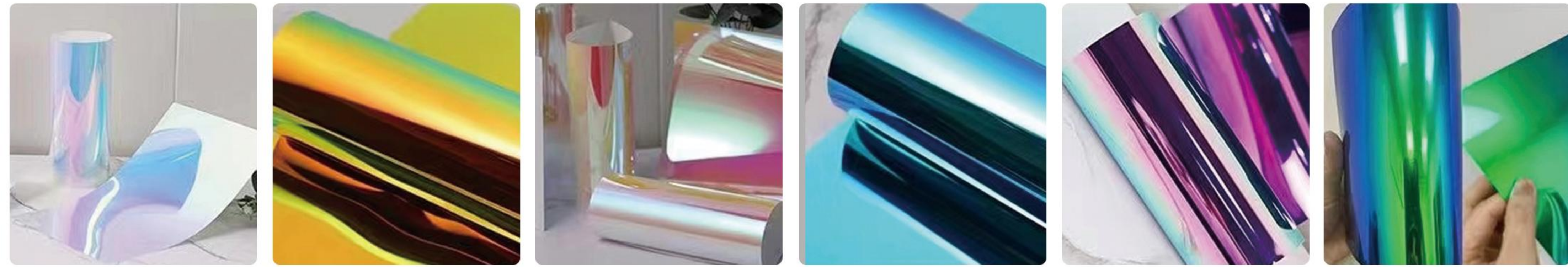


S-206 S-207

Water Ripple

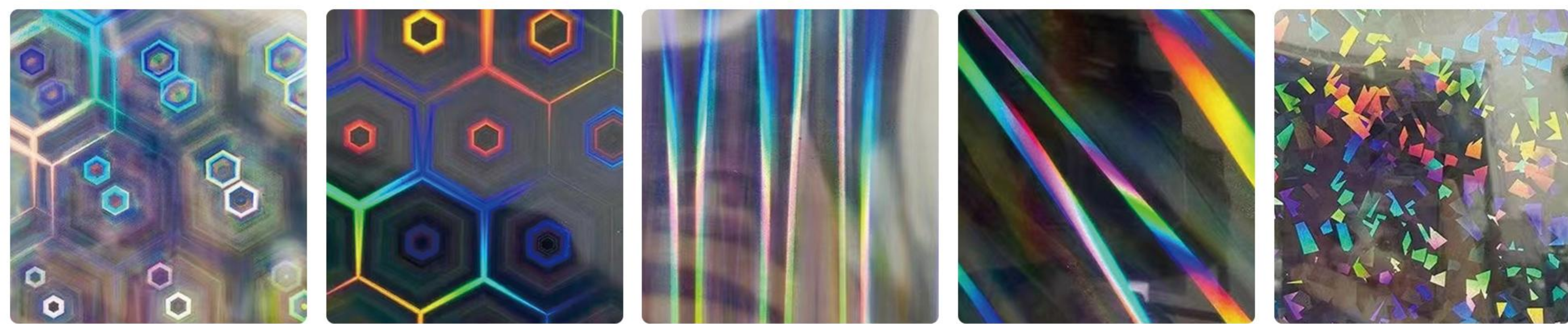


Color Focus



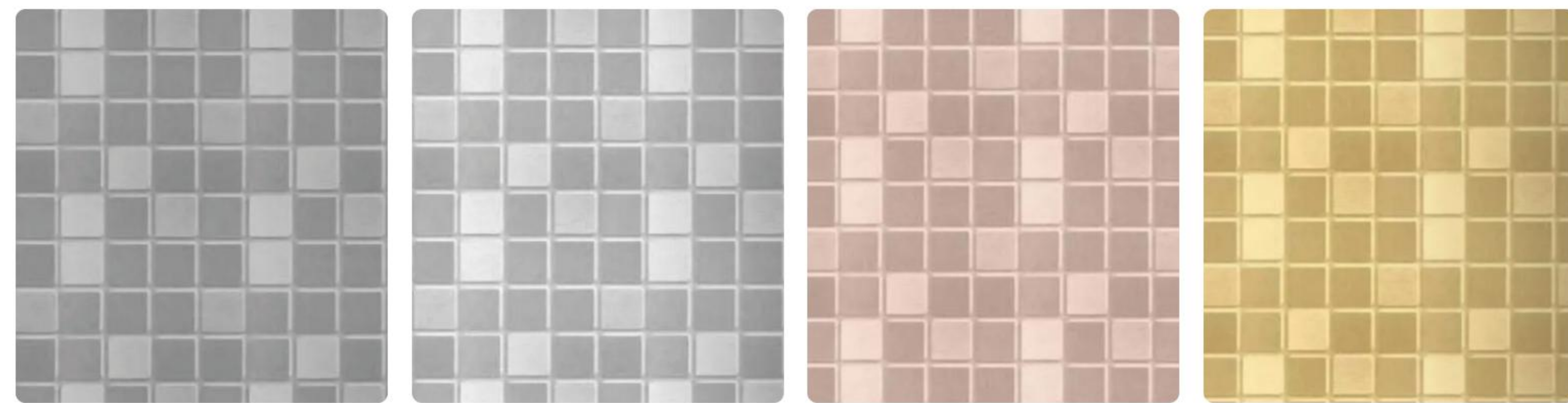
L-101 L-102 L-103 L-104 L-105 L-106

Laser

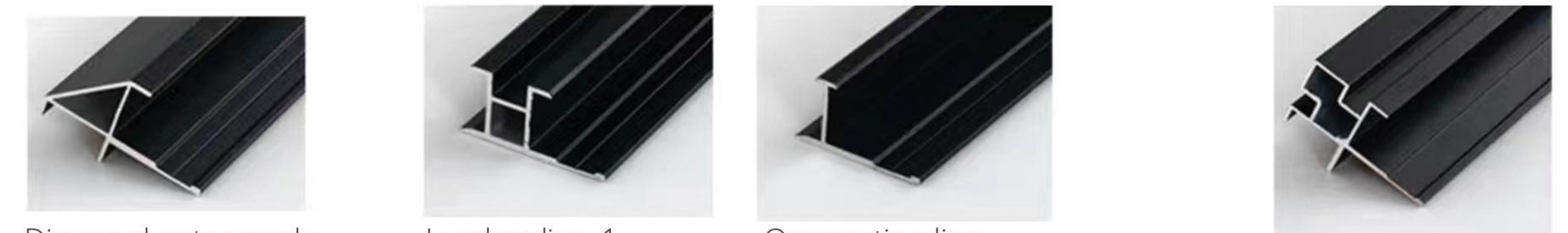
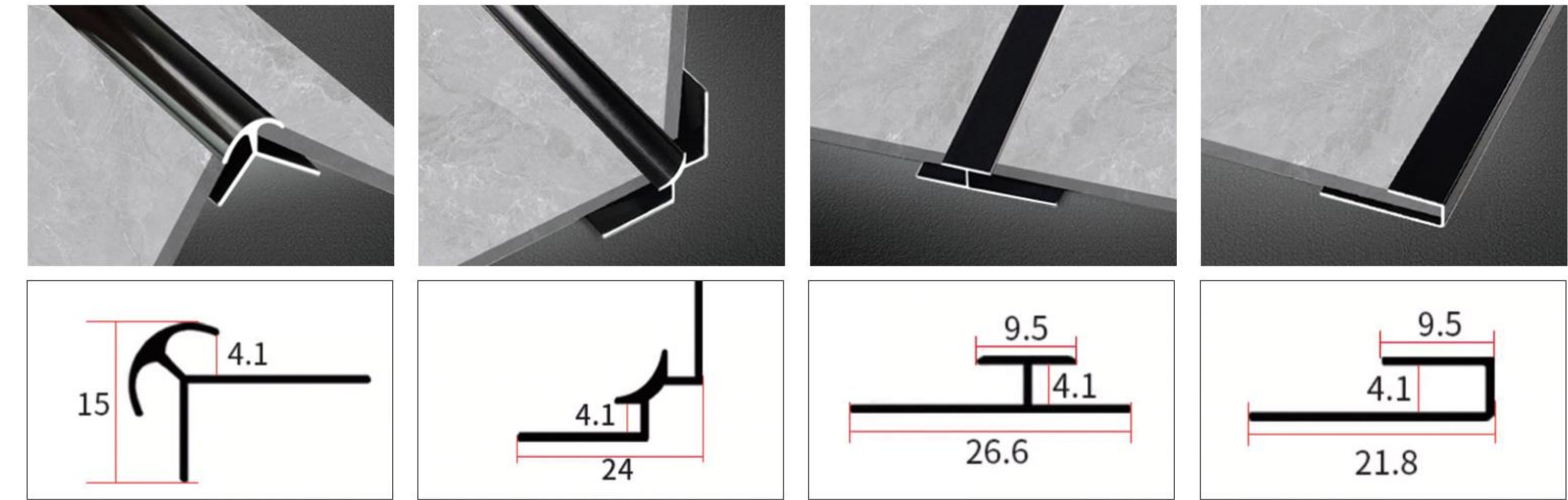


L-201 L-202 L-203 L-204 L-205

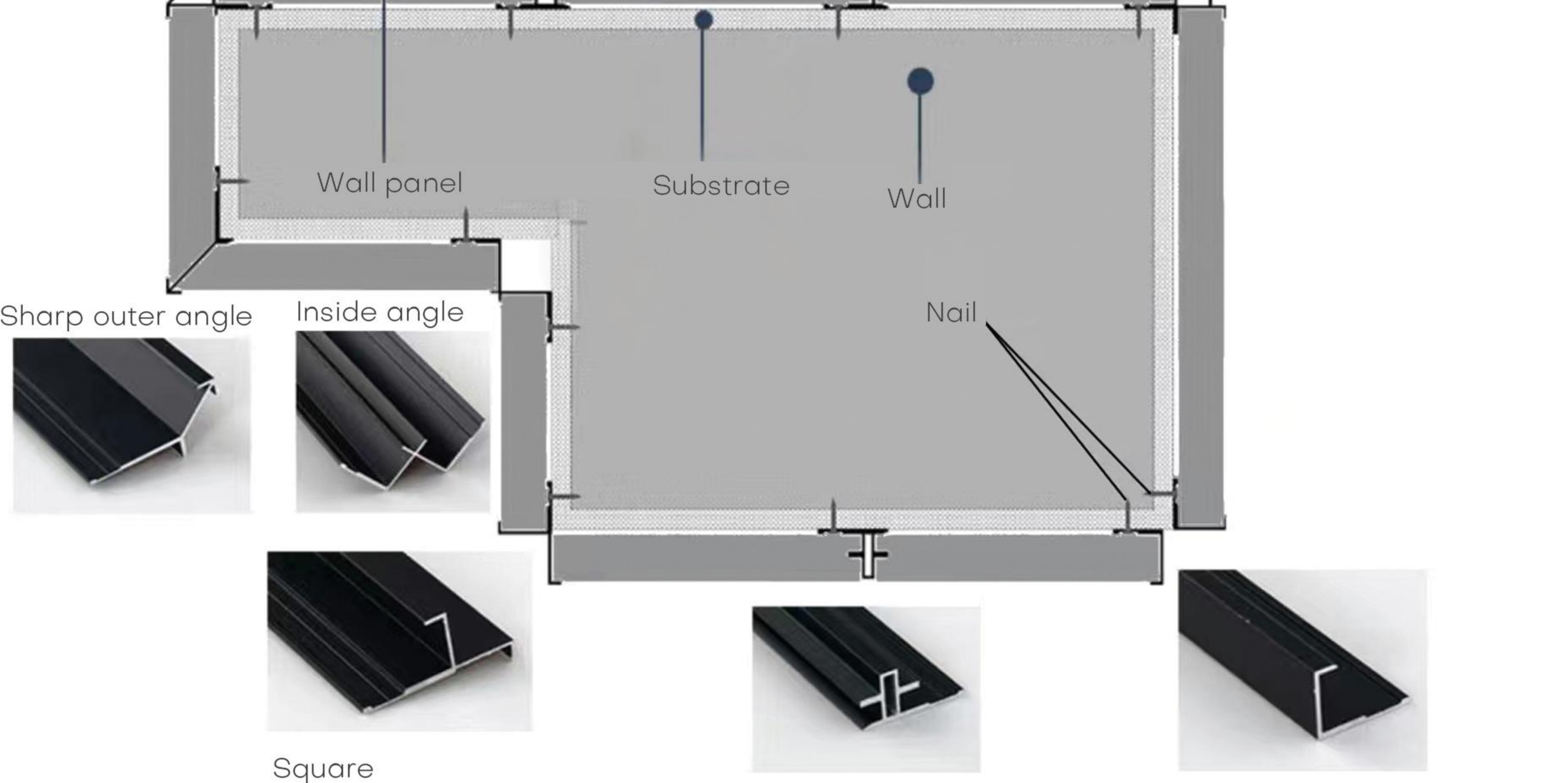
Mosaic



H-401 H-402 H-403 H-404

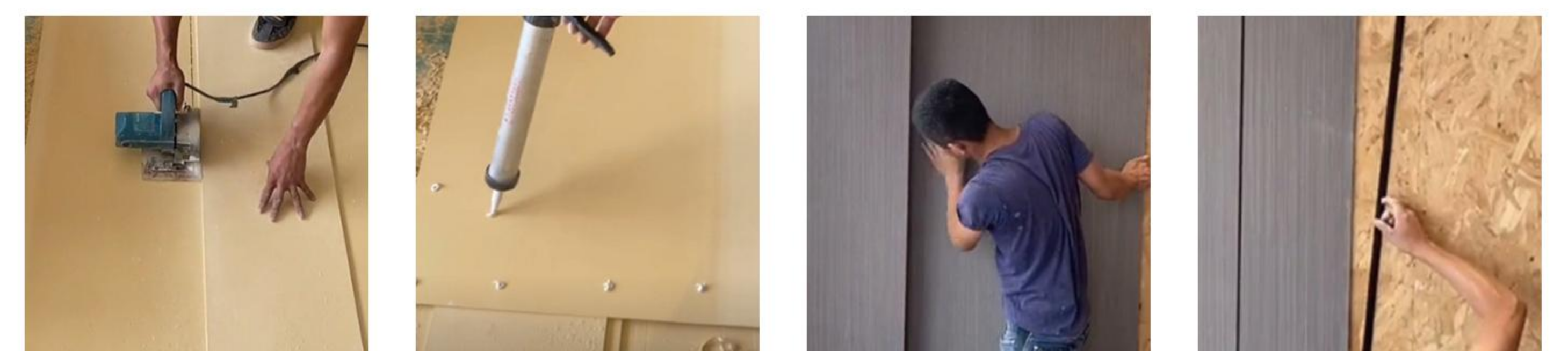


Diagonal outer angle Lumbar line-1 Connecting line Square outer angle-2



Sharp outer angle Inside angle Square outer angle-1 Lumbar line-2 Side line

Installation



Step 1: Cut the WPC foam board to size. Step 2: Apply no-nail free glue to the back. Step 3: Install on the wall. Step 4: Insert the dovetail strips.

